



Broadcast Electronics

Web-server firmware upgrade for SEXC30REMC card

Preface

This procedure is generic and applies to any equipment that mounts the SEXC30REMC web-server interface card. The example that follows refers to a transmitter of the EXCxxGT series but is valid, apart from the specific binary files, for any other equipment.

Update Requirements

The update requires a PC or laptop from which to perform the procedure with Windows OS (XP, Vista, 7, 8, 10), the specific program from which to launch the update procedure (IP Bootloader) and the update binary file relative to the machine. From here we will generically refer to “PC” as the device that will actually run the IP bootloader program. It is also required at least one Ethernet cable to connect the machine to upgrade to the local area network (LAN) or directly to the PC.

It is assumed that the machine to be updated is already preset and operational to communicate with the PC on the LAN or via its network interface

Procedure

1. Connect the machine to which you want to upgrade the firmware on the LAN where is the PC or directly to this latter via the network cable.
2. If necessary, set the machine to be updated with the correct LAN parameters and similarly the PC to the network address of this same. Be sure no other equipment on LAN uses the same IP address.
3. Using an Internet browser, log into your GTX/GRX using your Admin credentials to confirm the IP address is accurate.
4. If, despite being all apparently correct, the machine does not communicate with the Internet browser and especially if the PC is directly connected to it via a direct Ethernet cable, it is highly likely that the PC network card should be properly configured for the address of the Ethernet interface to update the machine. See Appendix at the bottom of this procedure.



5. Launch the Bootloader program clicking on its filename from any suitable location, i.e. from your desktop or directly from a memory stick. At the time being this is "SEXC30REMC_bootloader_v12.exe". A pop-up screen will open as in figure 2
6. Enter the current IP address of the machine on the "SEXC30REMC IP" field and click the "Load Firmware" button to load the specific updated binary files. At the time being, for transmitters of the GT / GX series this file is:

REMC_Link_293_BE.hex

7. Click on the "Program" button and wait for the loading of the software that will be highlighted by the progress of the bar.

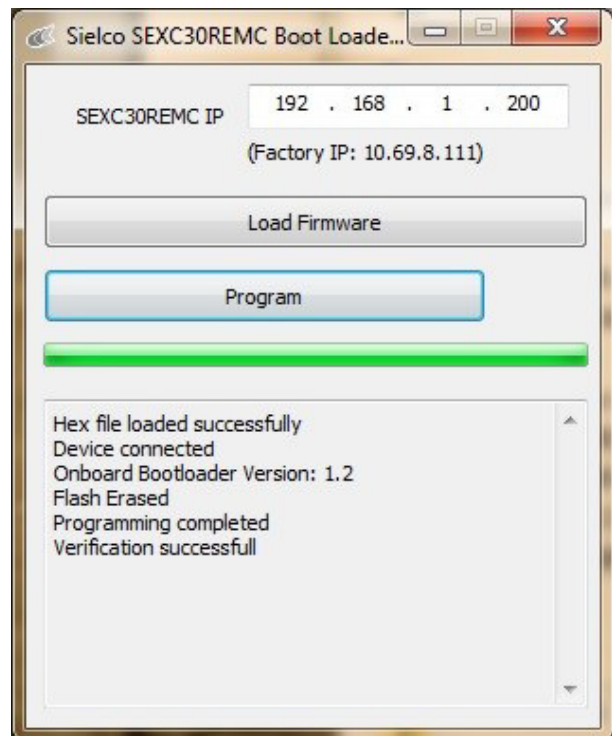


Figure 2: IP Bootloader

8. Close the Bootloader and verify via the browser that the web-server version has been updated as reported on the bottom of each web page. In our example on Figure 1 you see "Web Ver 1.4"



Broadcast Electronics